

# DRINKS MENU

---

## TEA

### Individual Pots of Tea from £3.25

Served in a china pot with a fine china teacup, strainer and milk if required.

Each pot will provide two cups of tea, if you wish to share your pot then there will be an additional charge of £2 for an extra cup to cover service. All our tea is the finest quality loose leaf, imported from the best tea estates around the world.

---

### Black Tea: Infusion Time 3-7 minutes

Black teas contain about half the caffeine of coffee, and research has shown drinking 4+ cups a day reduces the risk of stroke and heart attacks.

Darjeeling (Margaret's Hope) (+30p)

Assam (Bukhial) (+15p)

Java (Santosa)

Ceylon (Lovers' Leap) (+15p)

Kenya (Lelsa) FBOP

---

### Blends & Flavoured

Josephine's Lighter Breakfast Blend

English Breakfast (NEW BLEND)

English Breakfast Decaf (+35p)

Yorkshire Blend

Mocha Chai (+15p)

Earl Grey

Vanilla Earl Grey (+15p)

Keemun Gold China Black

Moroccan Mint

Russian Caravan (+15p)

Rose Congou (+20p)

Chaykhana

Caramel Dream

---

### Herbal : 6-8 minutes. Don't add milk.

Tea made from herbs rather than from the tea plant *camellia sinensis*, still has major health benefits such as digestive or wellbeing but nothing like Oolongs, White, Black or Green teas.

Peppermint Tea

Just Camomile (+15p)

Camomile & Pomegranate (+25p)

Camomile & Peppermint (very popular)

Camomile & Lime (+25p)

Nettle (+20p)

---

### Green Tea: 2-4 minutes. Best without milk.

Whilst green tea comes from the same plant as black tea, it is processed differently retaining more antioxidants. Helps burn triglyceride fats, prevents heart disease and possibly reduces cancer risk.

Lady Jo's G&T (+25p)

Jasmine Blossom

Japanese Sencha

Chunmee Taipan Superior

Genmaicha Popcorn Tea

China Congou

Cherry Sencha

Superior Detox (+15p)

---

### Rooibos: 6-8 minutes. Best without milk

Caffeine free herbal tea from South Africa. Very high in antioxidants and linked to helping control type-2 diabetes and cardiovascular disease.

Lemon Rooibos

Honeybush Rooibos

Coffee & Amaretto Rooibos

Orange Rooibos

Clanwilliam Rooibos

---

### Oolong: 1-2 minutes. Best without milk or sugar.

With increasing research pointing to help lowering blood pressure, cholesterol and body fat, Oolongs are fast becoming the health drink.

Body Beautiful (+15p)

Iron Goddess (+15p)

Orange Blossom Oolong

---

### Fruit Teas: 6-8 minutes. Don't add milk.

Infusions of delicious fruits combined for a flavoursome alternative to other hot drinks.

Mango Tango

Liquorice Sweetie

Berry Bonanza

Zingy Ginger & Lemon (+25p)

Wiked Kiwi & Strawberry

Spiced Apple (+15p)

Copacobana Dream

# DRINKS MENU

## WINES & SPARKLING

White wine	175ml	Bottle
Pinot Grigio, 12%	6.50	21.95
Sauvignon Blanc, 12%	6.75	23.55
Chablis, 12.5%		27.00

### Red wine

Cabernet Sauvignon, 12%	6.50	21.95
Merlot, 12%	6.75	24.15
Bordeaux, 13%		24.95
Rioja, 13.5%		25.95
Chateaufeuf du Pape, 14.5%		38.95

### Rose wine

Pinot Grigio Rose, 11.5%	6.25	22.15
--------------------------	------	-------

### Sparkling

Filipetti Italian Prosecco (glass)	8.00	
Filipetti Italian Prosecco (bottle)		24.00
Moet & Chandon (1/2 bottle)		44.50
Moet & Chandon (bottle)		88.50

### Beers & Ciders

Skinny (Gluten Free), 4% 330ml	4.55
San Miguel, 5% 330ml	4.25
Peroni, 5.1% 330ml	4.95
Proper Job Cornish IPA 5.5% 500ml	4.75
Koppaberg Straw' & Lime, 4% 330ml	3.35
Magners Dry, 5% 330ml	3.95

## SPIRITS

25ml measure (Double up for an extra £3):

Gin / Gin & Tonic	4.75 / 5.75
Jamieson's Whisky, Courvoisier	4.75
Vodka, Cointreau, Disaronno	4.75
Bacardi, Dark Rum	4.75

50ml standard measure:

Harvey's Bristol Cream	4.75
Tia Maria, Baileys	5.15
Martini Rosso, Pimms	4.75

## COFFEE & SOFT DRINKS

Espresso	2.00
Americano	3.45
Milk based coffees	3.95
<i>Cappuccino / Flat White / Latte</i>	
Caramel Nespresso	+50p
Mocha (50/50 hot chocolate/cappuccino)	4.95
Cadbury's Hot Chocolate	4.25
Irish Coffee	7.50
Baileys Hot Chocolate	7.50
Bottled sparkling or still water	1.75
Folkingtons Orange Juice	3.65
Glass of Apple Juice	2.95
Fentimans	3.65
<i>Elderflower - Victorian Lemonade - Sparkling Raspberry</i>	
Bottle of Coke / Diet Coke (330ml)	3.35/3.15
Tonic Water / Soda Water	1.25

## DESSERTS

NEW Mini Sweet Selection 8.25

*A selection of mini cakes and desserts from the patisserie fridge beautifully presented. Subject to availability. Each plate will contain a minimum of 5 items.*

Decorated Cake Slice 6.25

*Treated with the love and respect it deserves, each slice is served with double cream & seasonal fruit and dusted in gold. See our cake counters for today's available cakes.*

Rich Boozy Bailey's Brownie with ice cream 7.95

Sticky Toffee Sponge Pudding in Custard 5.95

Chocolate Fondant Dessert with Ice Cream 5.95

Blackcurrant Crumble & Custard 6.35

Knickerbocker Glory Surprise 6.25

*A delicious medley of a selection of ice cream, cake, sauces, fruit made in a traditional way.*

Baileys Knickerbocker Glory 8.25

*A delicious medley of a selection of ice cream, Bailey's Brownie, sauces and fruit made in a traditional way then drizzled with a 25ml shot of Bailey's liqueur. Contains alcohol.*



### COCKTAILS: £11.95

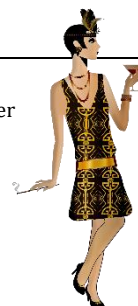
Speakeasy 9.4% abv  
Gin, Cointreau, Orange Juice, Grenadine

Great Gatsby 9.8% abv  
Dark Rum, Vodka, Gin, Cointreau, Tropical Mango syrup, Coke

Audrey Hepburn 11% abv  
Gin, Red Vermouth, Fentimans Elderflower

Judy Garland 13.8% abv  
Pimms & Prosecco

Lady Chanel 10.2% abv  
Baileys, Khalua, Tia Maria



### MOCKTAILS: £5.95

Non-Alcoholic Cocktails hand crafted in Nottingham.

- ★ Tropical Sensation ★
- ★ Strawberry Mojito ★
- ★ Passion Fruit Cooler ★